

# Tappa 13 - Da Maddaloni a Montesarchio

---

**Partenza** Convento dei Padri Carmelitani Scalzi, piazza Annunziata, Maddaloni

**Arrivo** Comune di Montesarchio, via Roma 1, Montesarchio

**Lunghezza totale** 26.0 km

**Come arrivare** <p>Stazione FS Maddaloni Inferiore sulla linea Napoli-Caserta&nbsp;&nbsp;&nbsp;</p>

## Descrizione

Tempo di percorrenza: 7 ore

Difficoltà: media

Dislivelli: 427 m in salita, 198 m in discesa

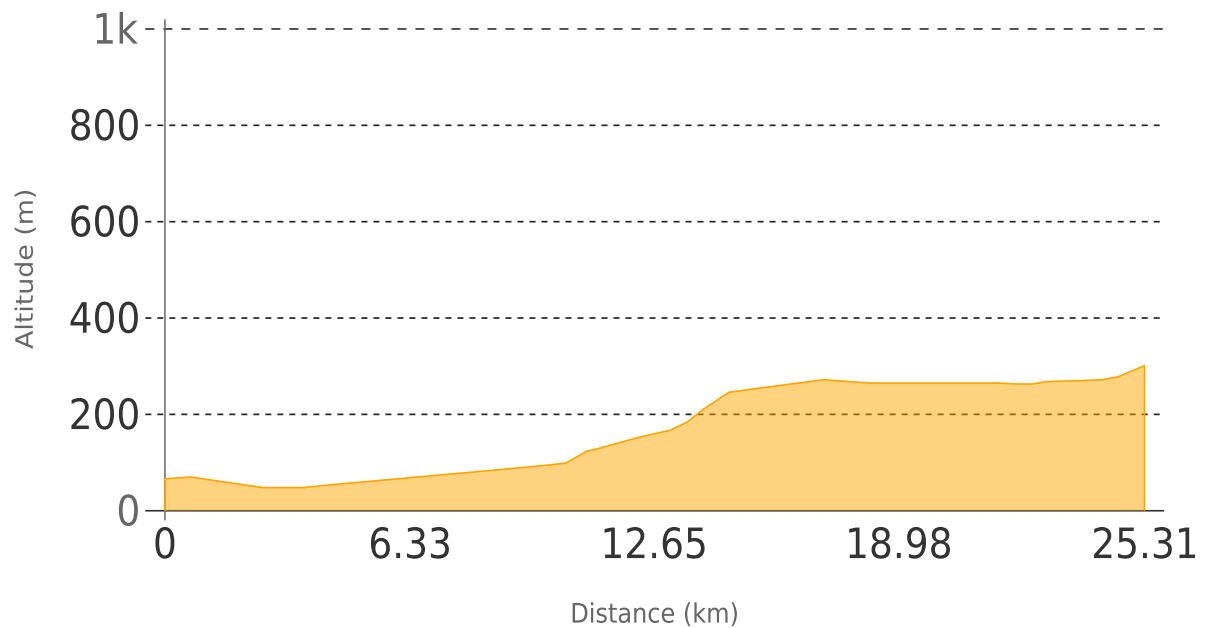
Tipo di percorso: prevalenza di strade asfaltate

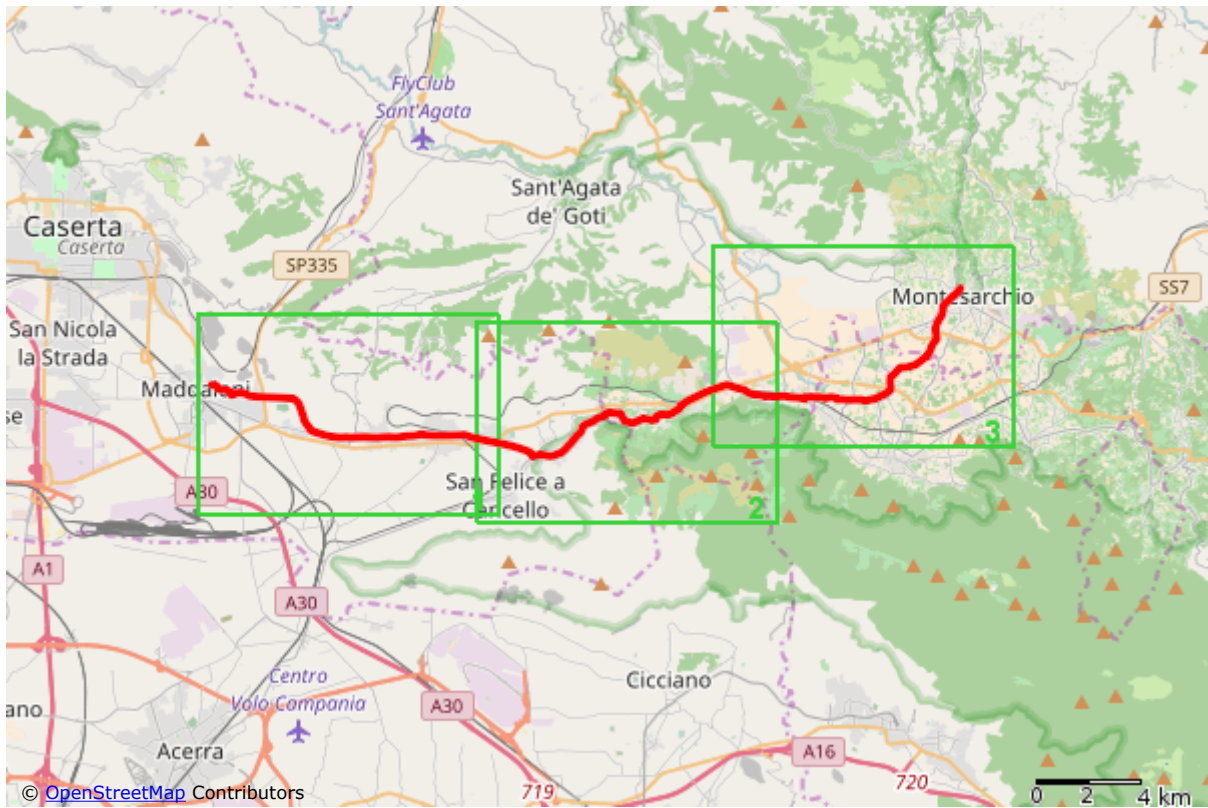
Punti critici: nessuno

Collegamenti: stazione FS Maddaloni Inferiore sulla linea Napoli-Caserta

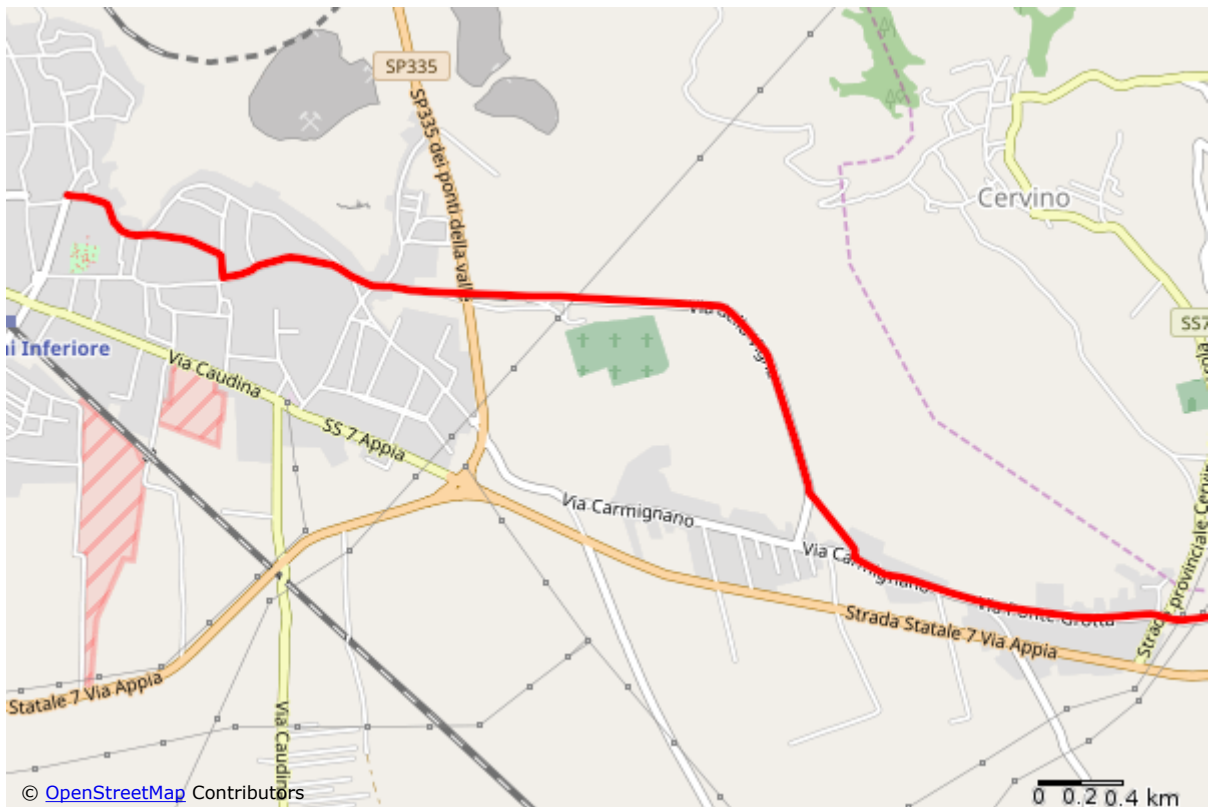
## Profilo altimetrico

---

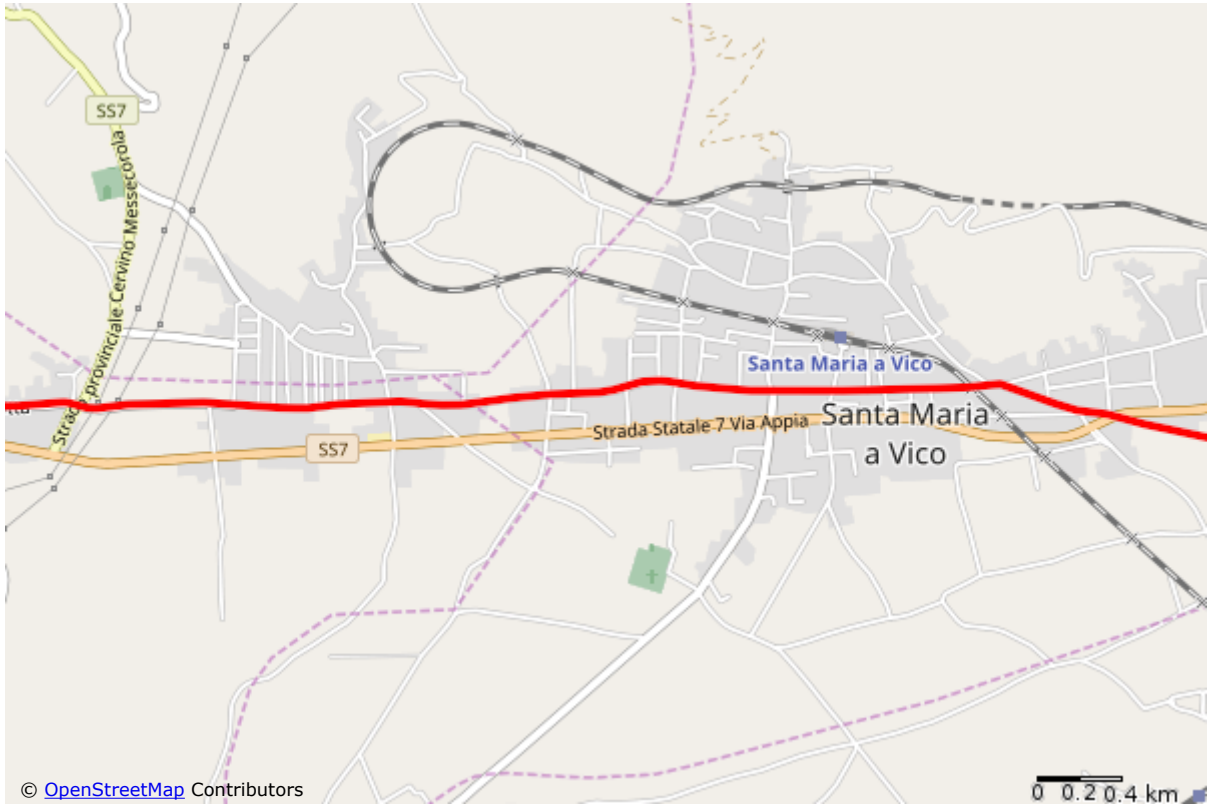




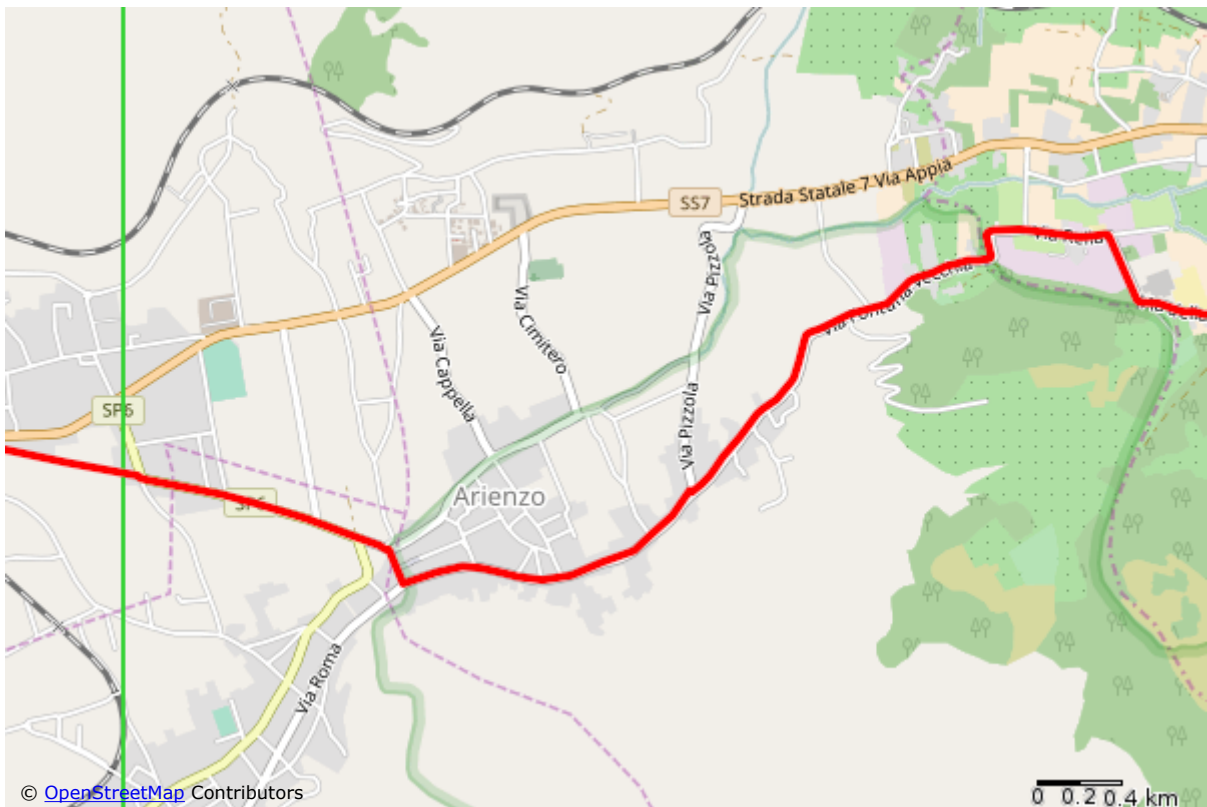
Overview map



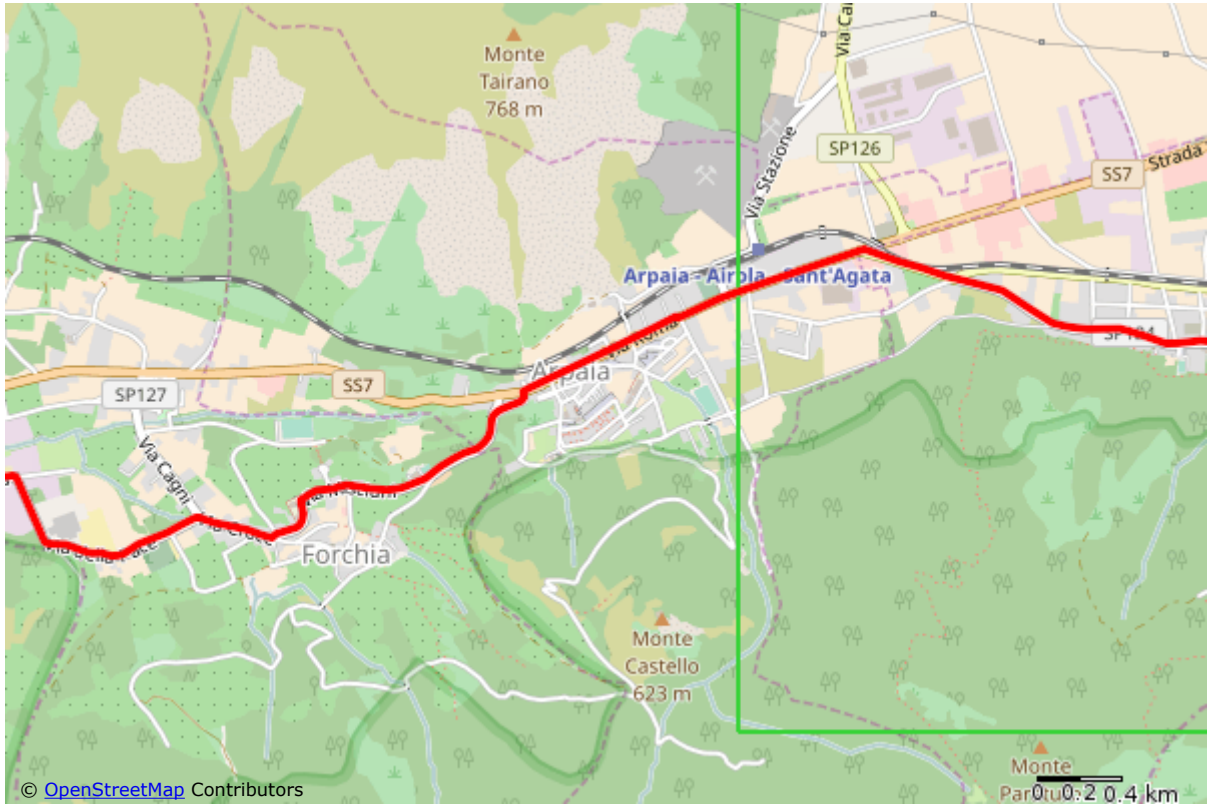
Detail map #1



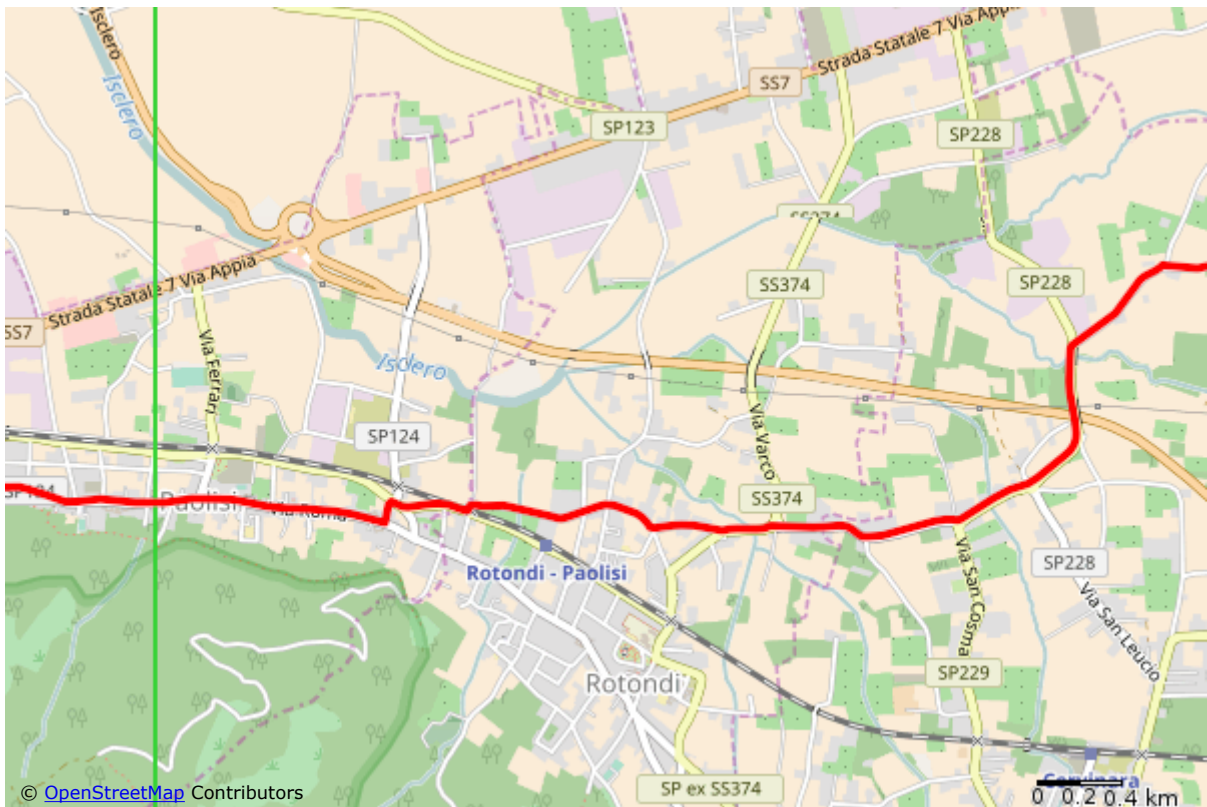
Detail map #2



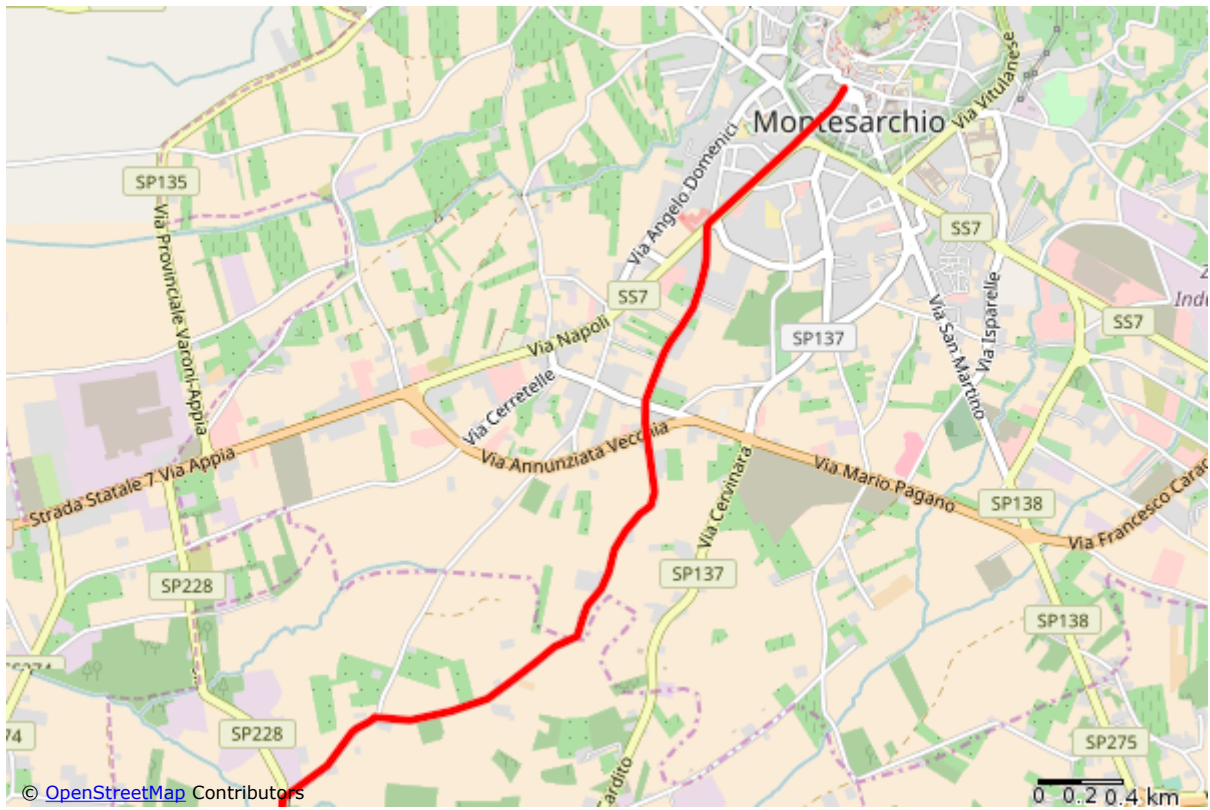
Detail map #3



Detail map #4



Detail map #5



Detail map #6