

Tappa 09 - Da Formia a Sessa Aurunca

Partenza Municipio di Formia, via Vitruvio 3, Formia

Arrivo Cattedrale dei Santi Pietro e Paolo, Sessa Aurunca

Lunghezza totale 31.8 km

Come arrivare <p>Stazione FS Formia-Gaeta sulla linea Roma-Napoli, Autolinee Cotral, tel. 800 174471 o 06 72057205, www.cotralspa.it</p>

Descrizione

Tempo di percorrenza: 8 ore e 50 minuti

Difficoltà: media

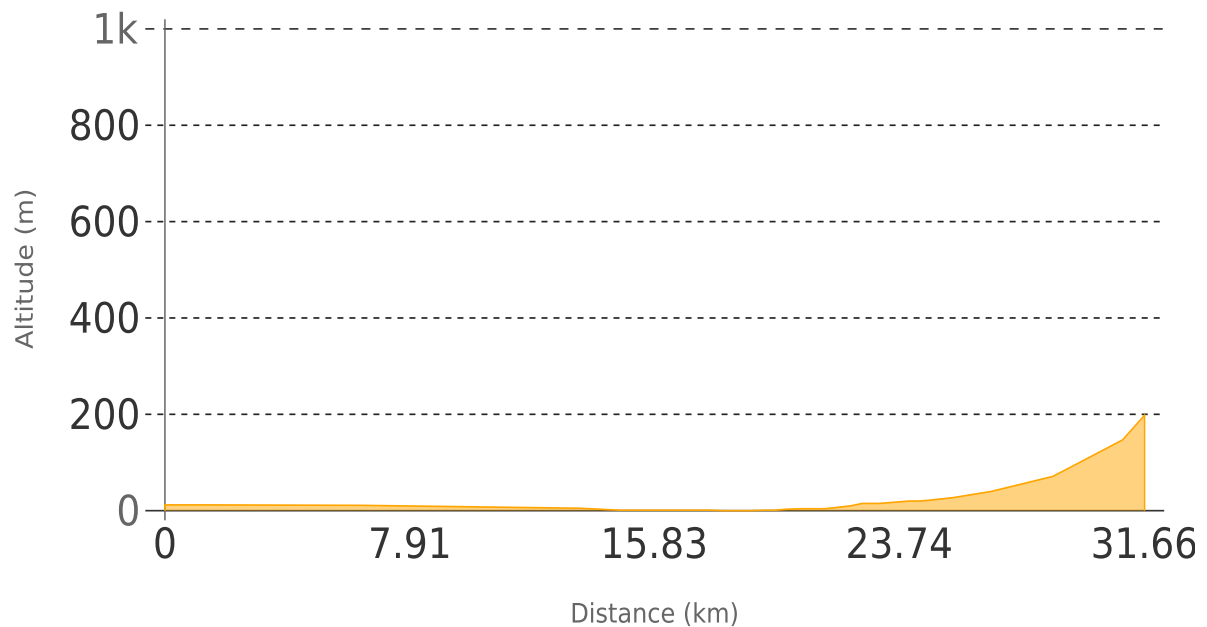
Dislivelli: 222 m in salita, 58 m in discesa

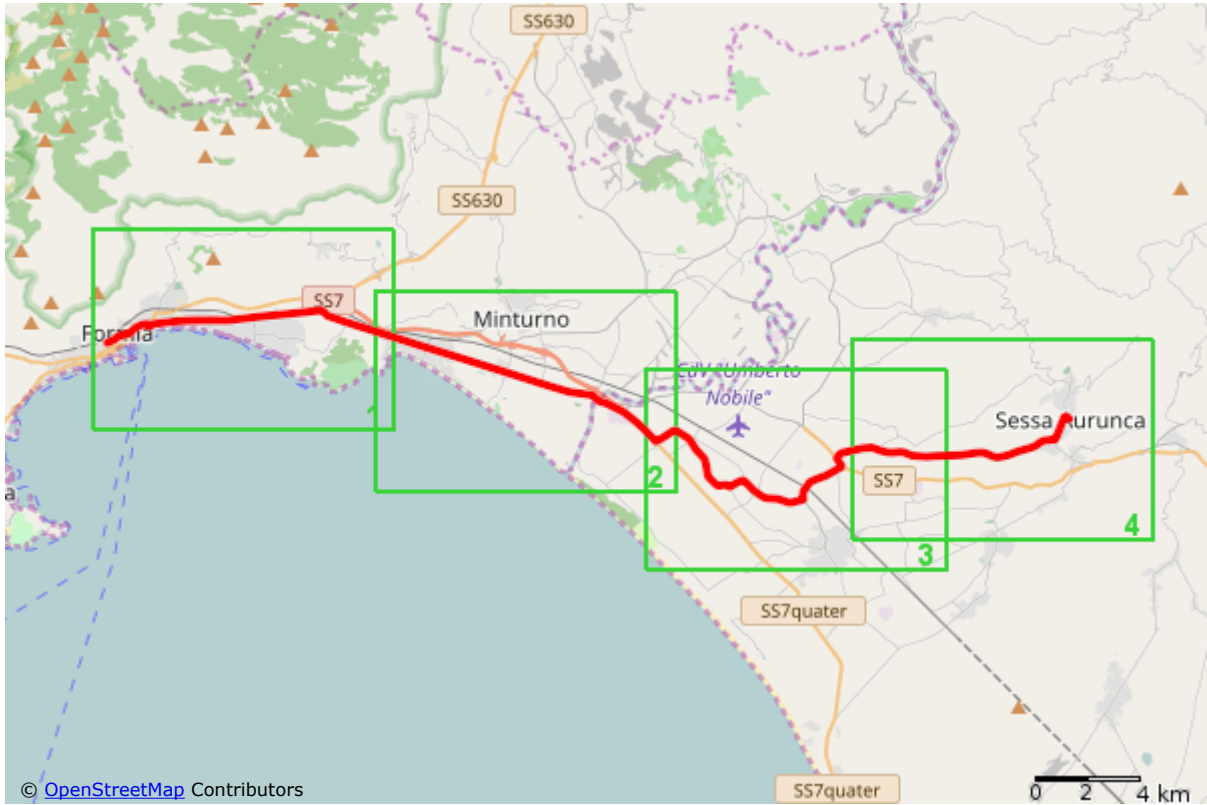
Tipo di percorso: misto di strade asfaltate e carrarecce Punti critici: un tratto pericoloso per i pedoni sulla carreggiata della SS7

Punti critici: un tratto pericoloso per i pedoni sulla carreggiata della SS7

Collegamenti: stazione FS Formia-Gaeta sulla linea Roma-Napoli Autolinee Cotral, tel. 800 174471 o 06 72057205, www.cotralspa.it

Profilo altimetrico

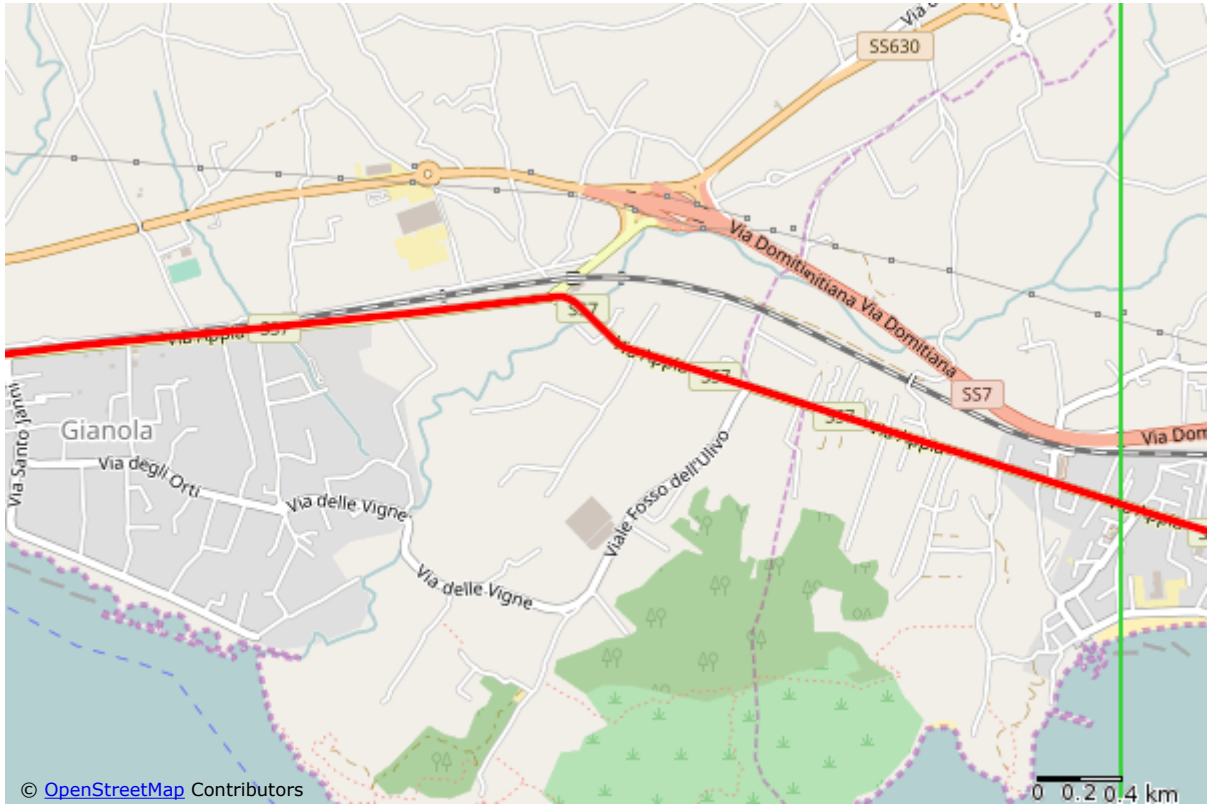




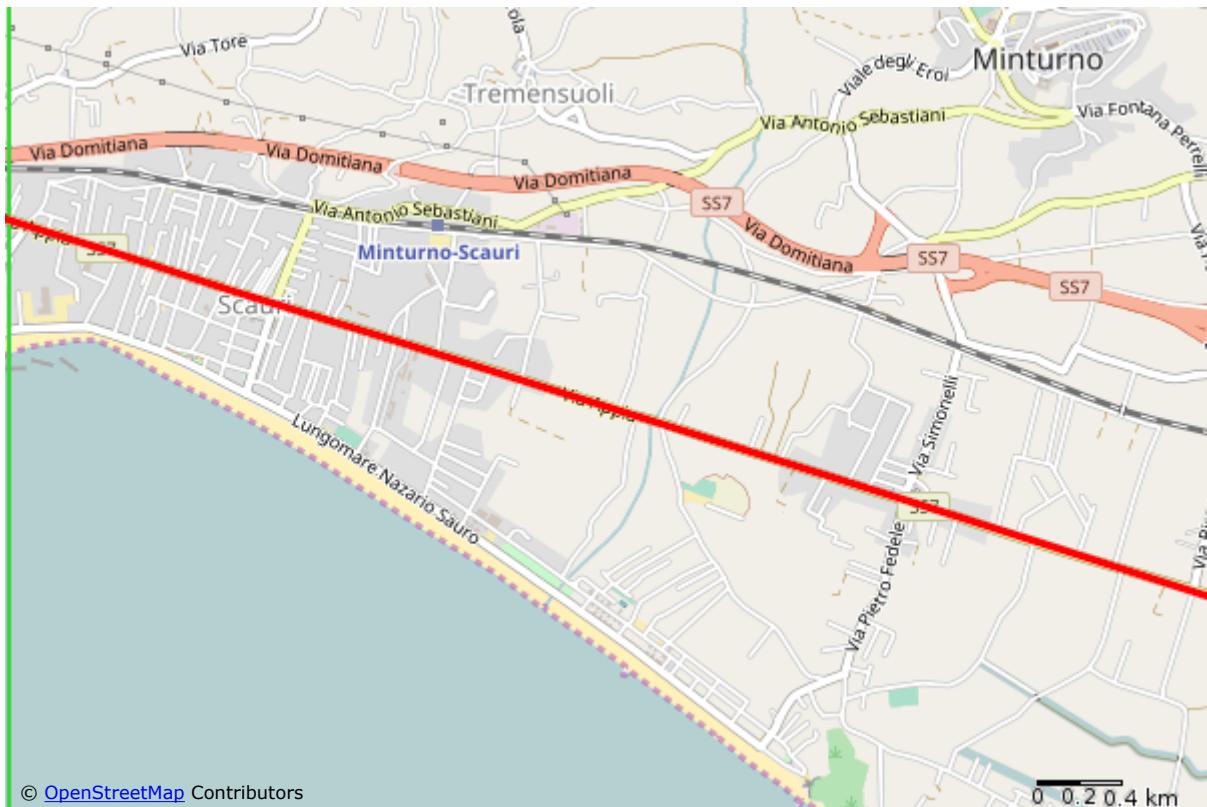
Overview map



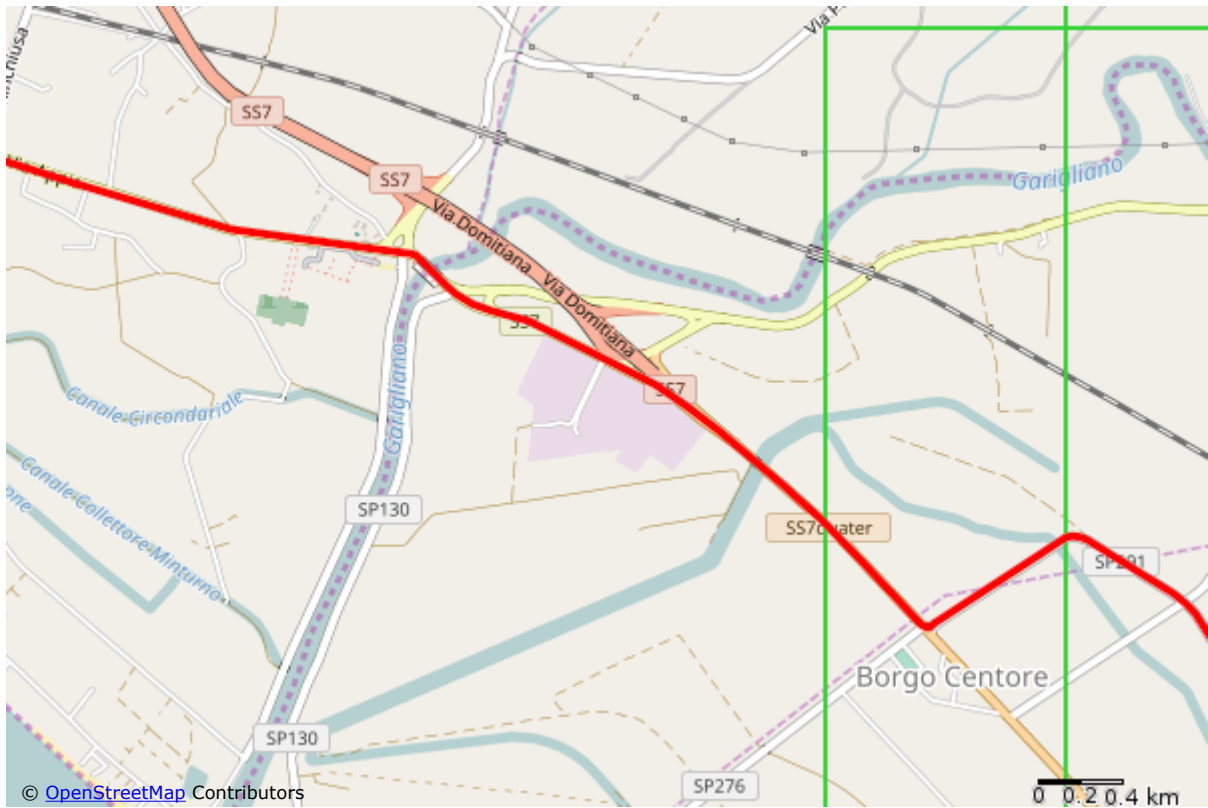
Detail map #1



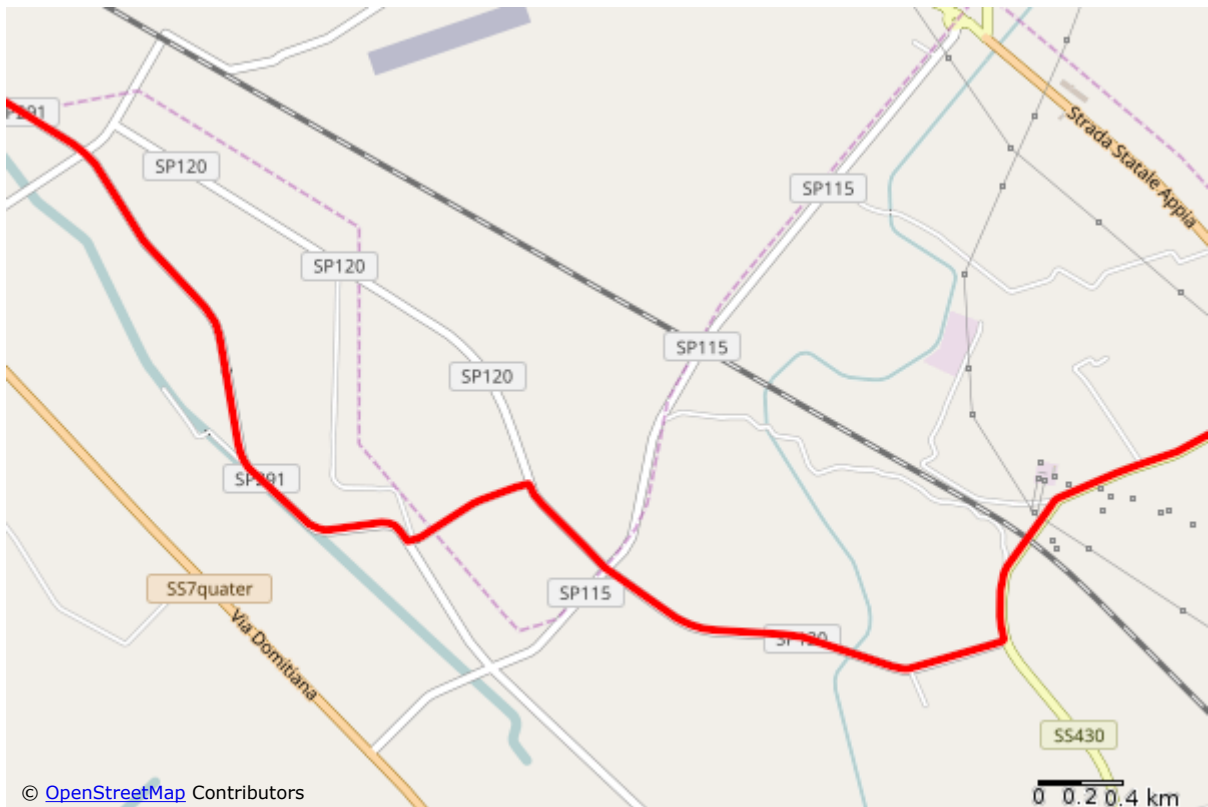
Detail map #2



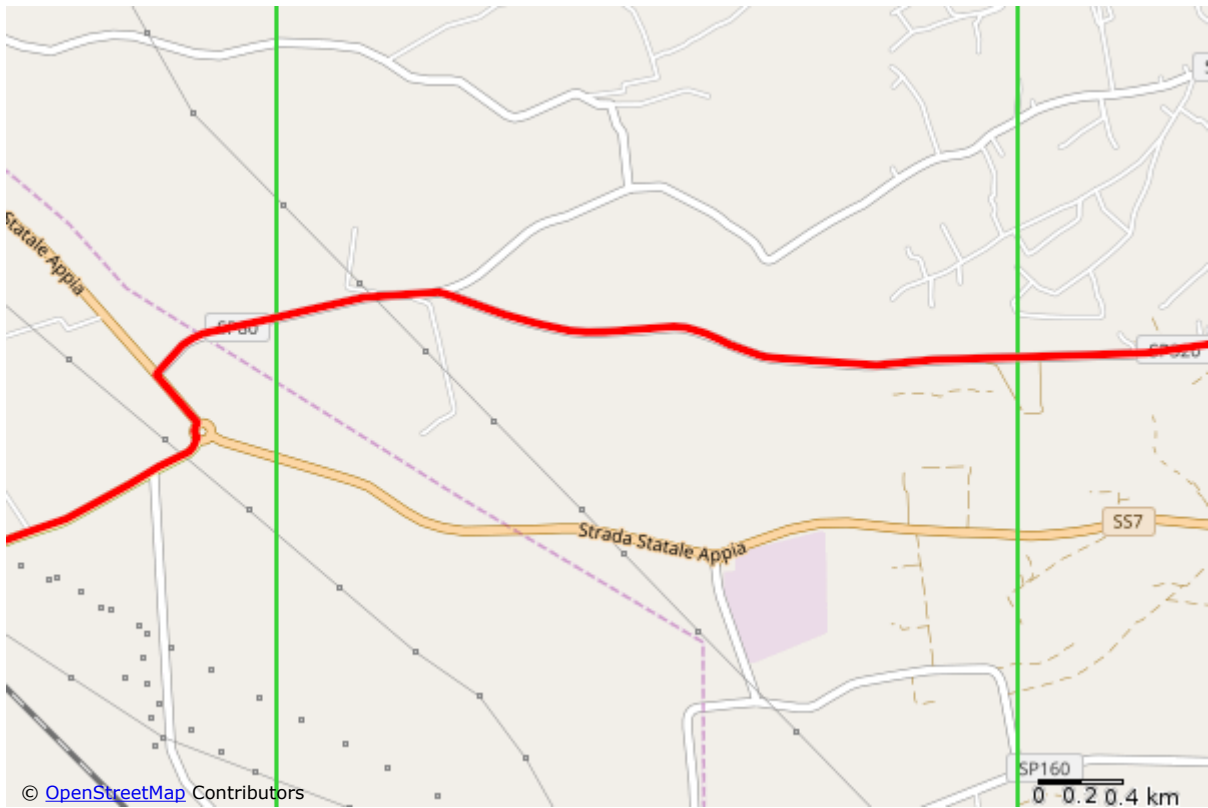
Detail map #3



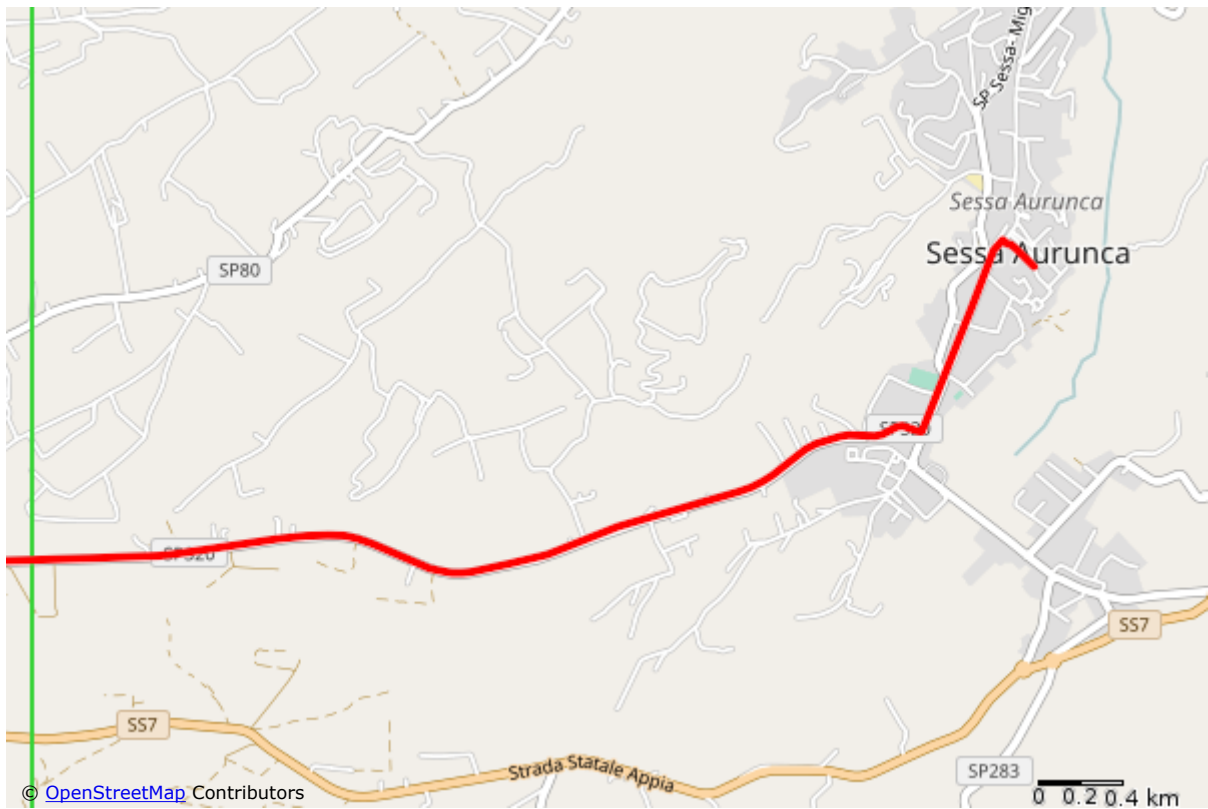
Detail map #4



Detail map #5



Detail map #6



Detail map #7